

---

# WATCHFUL EYES

---

Instructional Workshop Packet by Kay Witt



# Introduction

---

This project is painted on light grey or sienna pastel mat by Clairefontaine. Other colors are available, but the grey paper is most suitable because it is neutral in color. It can be purchased through many art suppliers.

The project uses Carb Othello Pastel Pencils by Stabilo.

A color chart of all the pastels used in the project is included. It will help guide you to know what color to place in your painting and aid you in matching colors, if the particular brands mentioned are not available to you.

When you search my name, Kay Witt, on You Tube, you will find several demonstrations on my You Tube Channel. These will give you further assistance in the method of painting used in this project.

Feel free to email me at [sleepingdogart@gmail.com](mailto:sleepingdogart@gmail.com) with any questions you may have to help you through this process. You are also encouraged to attend one of my workshops listed on my website at [www.kaywitt.com](http://www.kaywitt.com) given at my Virginia studio.

# Color List - Pastel Pencil

---

Pastel pencils are Carbothello by Stabilo. Stick pastel by NuPastel. Charcoal pencils by General. Paper is PastelMat by Clairefontaine.

CO= Carbothello Pastel Pencil    NP= NuPastel

## Wolf Fur Colors

### Dark Colors

750 Neutral Black

6B Charcoal Pencil

### Middle Value Colors

770 Payne's Gray

640 Caput Mortem Violet

670 Burnt Sienna

726 Cold Gray 4

680 Dark Flesh Tint

### Highlight Colors

White Charcoal Pencil

110 Gray White

105 Ivory

## Other Colors

### Tail

770 Payne's Gray

390 Prussian Blue

White Charcoal Pencil and 211 NP White

### Background Snow

770 Payne's Gray

390 Prussian Blue

430 Ultramarine Blue Middle

White Charcoal Pencil and 211 NP White

### Eyes

430 Ultramarine Blue Middle

670 Burnt Sienna

221 Orange

640 Caput Mortem Violet

210 Orange Yellow

White Charcoal Pencil

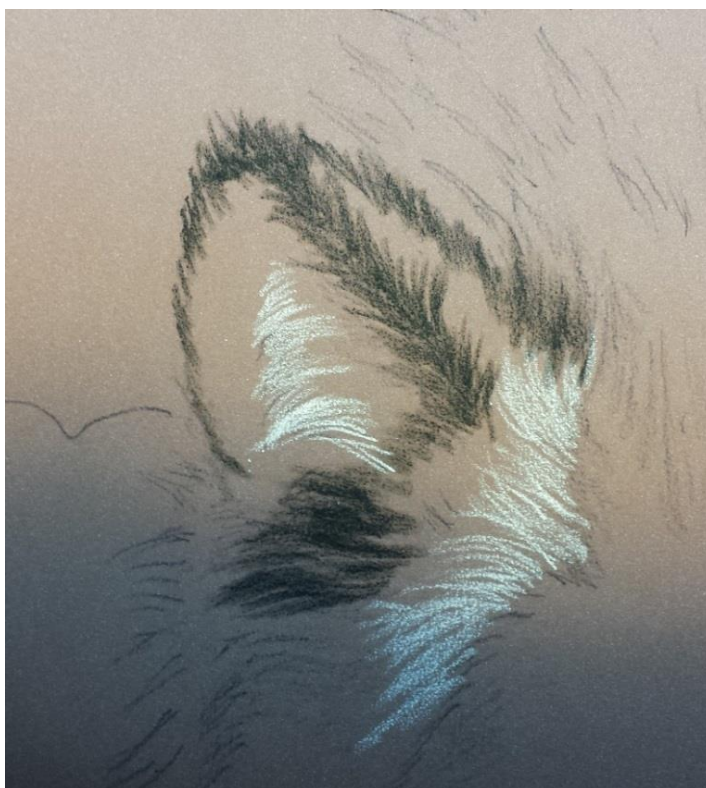
## Order of Application of Colors

It is important not to lose your way in the painting. Map out each area with the darkest dark (Black) and the lightest light (White). Then add the medium value colors. After that, come back and add more lights and then the darkest black.

Colors are not applied solidly over the area. Strokes are scratchy. Always follow the direction of the fur.

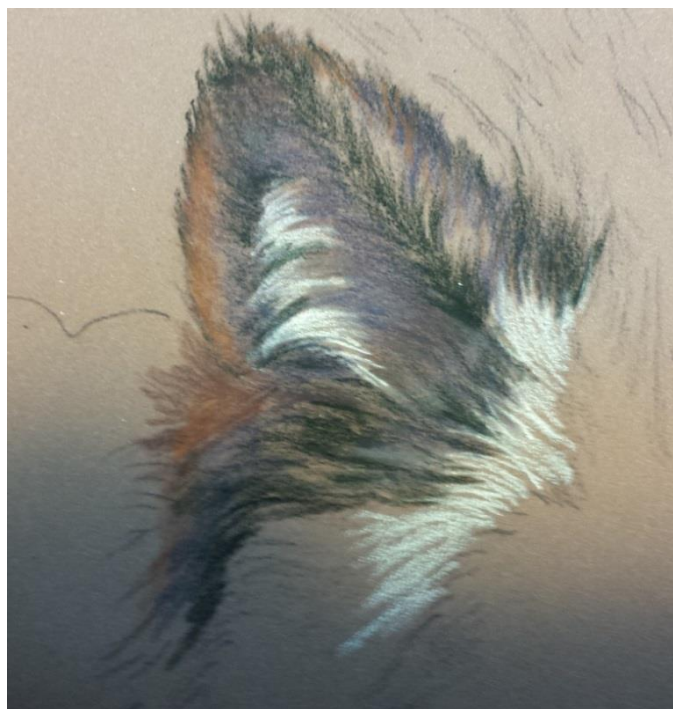
### Ears

Place the dark and light colors first to create a map. Using a **750 CO (Neutral Black)** add the darkest hairs in the ear. Using the **White Charcoal Pencil**, add the lightest light hairs in the ear.





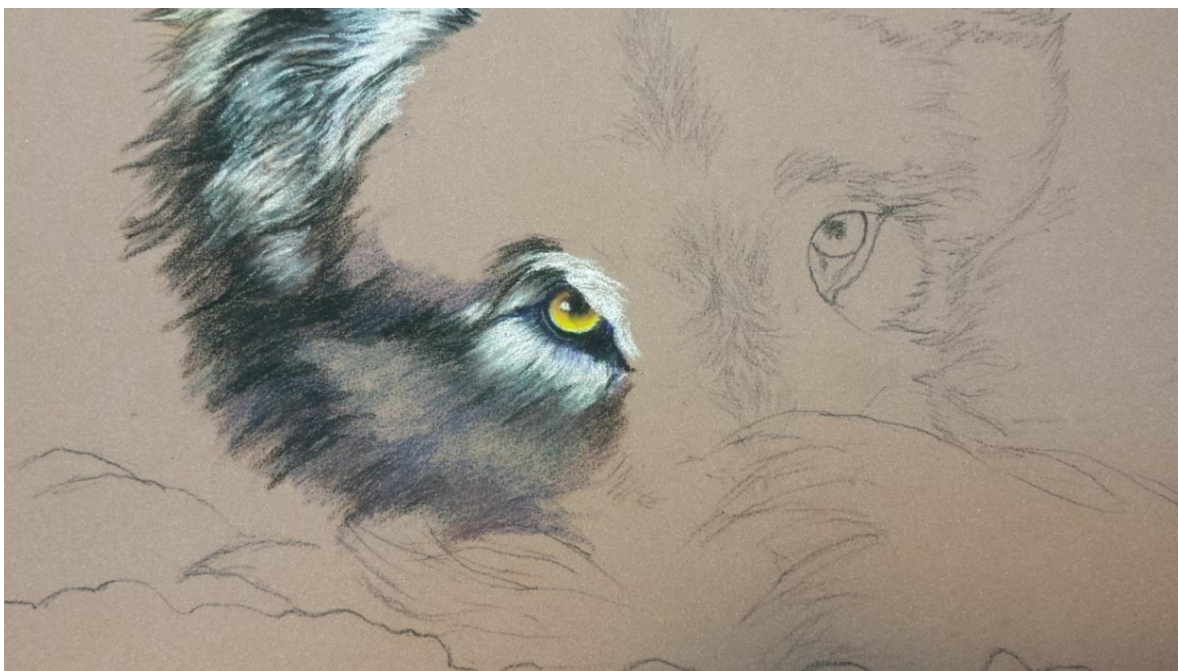
Next, add the middle value colors with **770 CO (Payne's Gray)**, **640 CO (Caput Mortem Violet)**, **726 CO (Cold Gray)** and **680 CO (Dark Flesh Tint)** on the outer ear. Use a light feathery stroke in the direction of the fur.



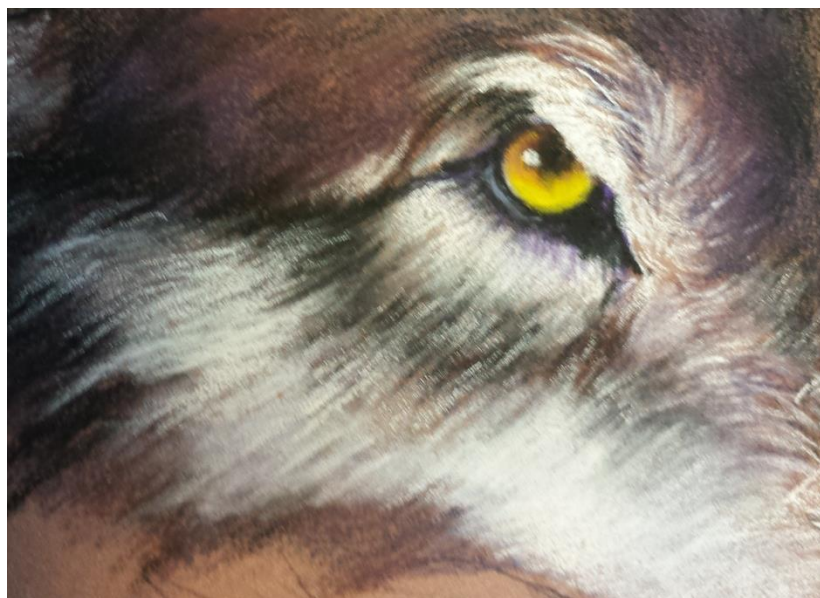
The medium value colors help to fill in the tooth of the paper making the final layer smoother and producing the fur look we are after. Next, add additional light with a sharp **110 CO (Gray White)** and use **105 CO (Ivory)** on the lighter hairs on the outside of the ear. Use the **White Charcoal Pencil** over the 110 to add the brightest hairs.

Finally add the darkest black with the **6B Charcoal pencil**.





Place the dark **750 CO (Neutral Black)** on the side of the face and then add the light hairs with the **White Charcoal Pencil** around the eye. Add the middle values with **770 CO (Payne's Gray)**, **740 CO (Caput Mortem Violet)**, and **726 CO (Cold Gray 4)**. Then follow with the lights, **110 CO (Gray White)** and **White Charcoal Pencil** over top of the gray.





## Eyes

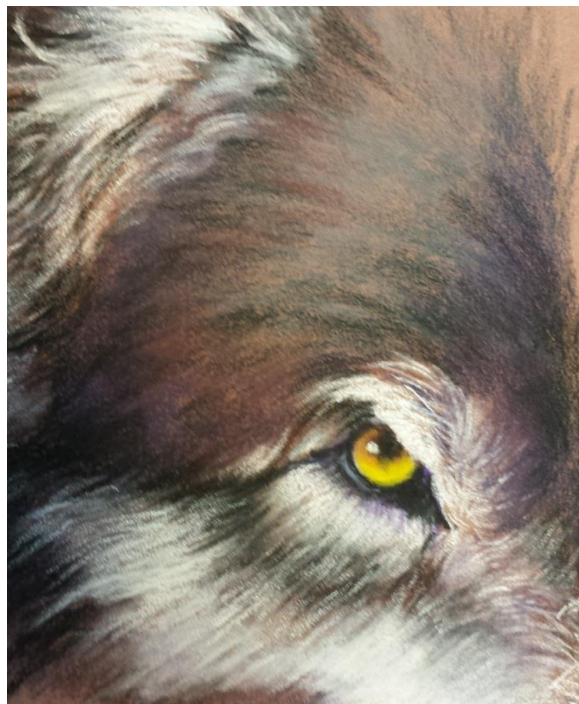
Outline eyes with **6B Charcoal Pencil**. Use a **430 CO (Ultramarine Blue Middle)** to put a highlight on the rim. Darken the pupil with **6B Charcoal Pencil** and feather it slightly. It makes the animal look less fierce. Use **670 CO (Burnt Sienna)** to add color around the pupil and on the very lowest edge of the iris at the rim. Fill in the iris with **221 CO (Orange)**. Use **640 CO (Caput Mortem Violet)** to darken the inner corner of the eyes and directly above the pupil where the lid casts a shadow over the eye. Add **210 CO (Orange Yellow)** in the center of the iris on the right side, stroking inward gently to form a lighter accent. Use the **White Charcoal Pencil** to add the brightest white.



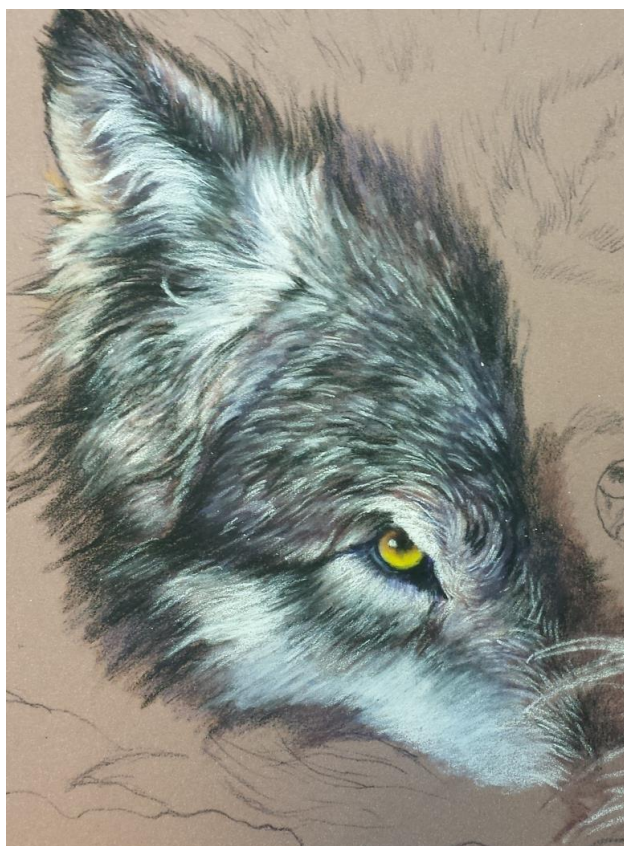
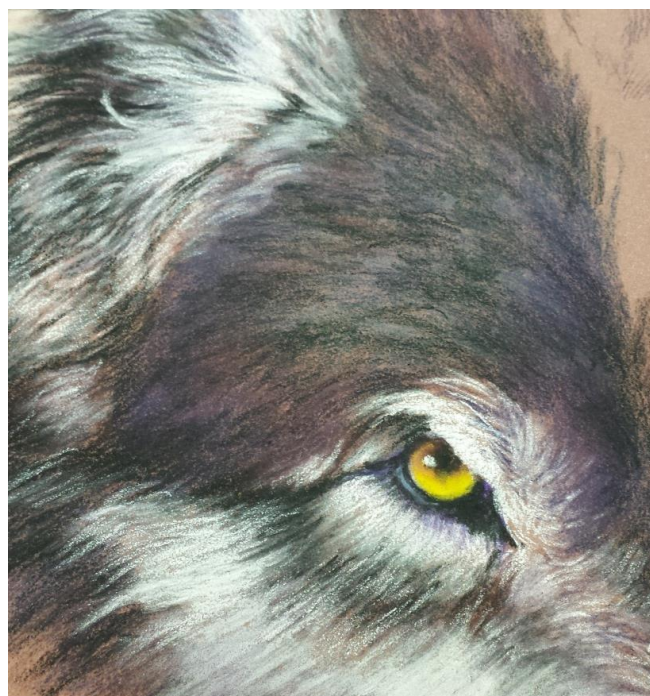
**Payne's Gray (770)** has a purplish cast to it. Since it is the complement of yellow, by using it in the fur around the eyes, the eyes seem to glow. Using complements in proximity creates a vibration between those colors. It makes the color more intense.



## Right Side of the Face



Mark the light and dark areas of the face with the **White Charcoal Pencil** and **750 CO (Neutral Black)**. Add the medium value colors, **770 CO (Payne's Gray)**, **740 CO (Caput Mortem Violet)**, and **726 CO (Cold Gray 4)**.



Add the lighter hairs with the **110 CO (Gray White)** and the **White Charcoal Pencil**. The hairs in this area are shorter than the hairs in the ears. Be sure and follow the direction of the fur growth.

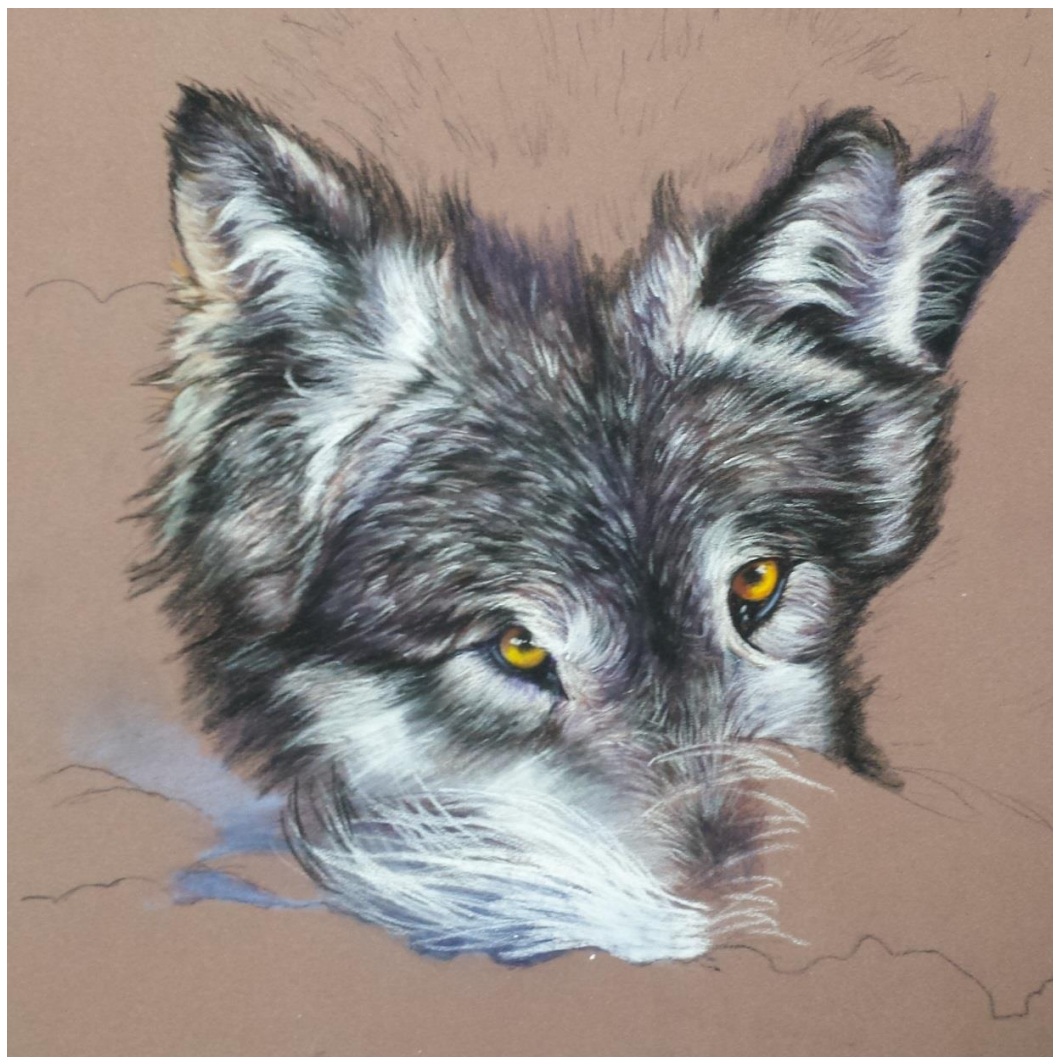
Paint the other ear and the other side of the face using the same method as the left side. (See pictures on the following page.)





## Tail

Shade the base of the tail in front of the nose with **770 CO (Payne's Gray)** and **390 CO (Prussian Blue)**. Draw hairs with the **White Charcoal Pencil** and **211NP (White)**.

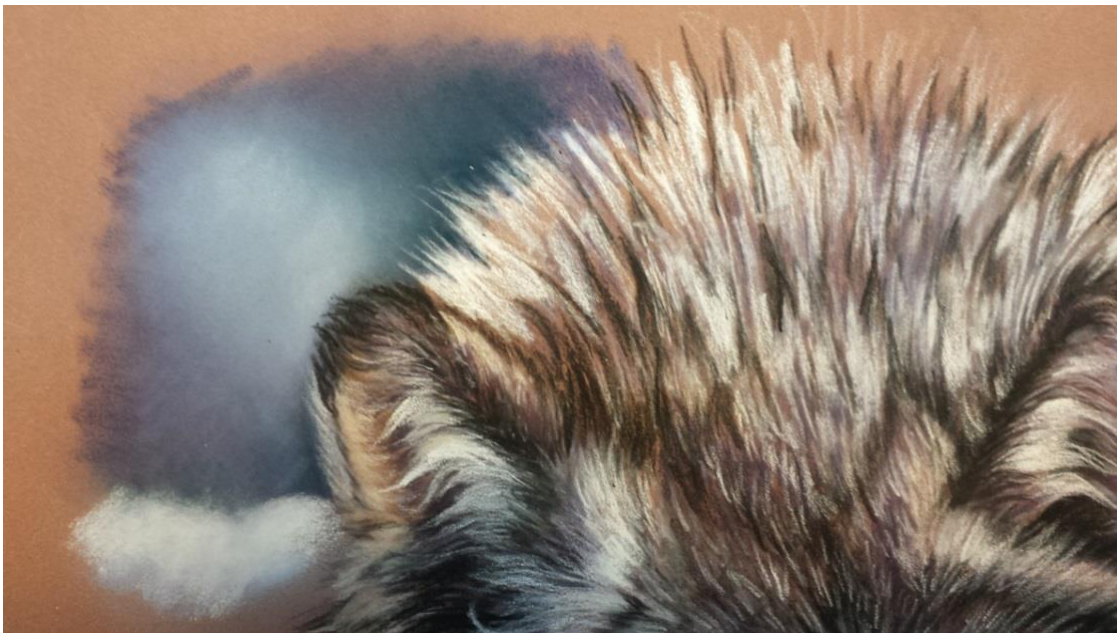


## Back above Top of Head

Place darks with **750 CO (Neutral Black)** and lights with **White Charcoal Pencil**. Add middle values with **770 CO (Payne's Gray)**. Use the sharp side edge of the **211NP (White)** to add white hairs and **6B Charcoal Pencil** to add black ones. Use the #4 flat bristle brush to blend this area and make less distinct. If you don't have a brush, use your finger to blend.

## Background-Upper Left Side

Use **770 CO (Payne's Gray)** and **390 CO (Prussian Blue)** to add dark shading to the area as seen in the picture. Layer color evenly. Color is best applied by holding your pencil on its side. Add **430 CO (Ultramarine Blue Middle)** on top for lighter area. Add **White Charcoal Pencil** over the blue near the middle of the area and blend the layers with your fingers. Use the **White Charcoal Pencil** and the **6B Charcoal Pencil** to pull the hairs on the side of the wolf into the background.





### Lower left Side of Background

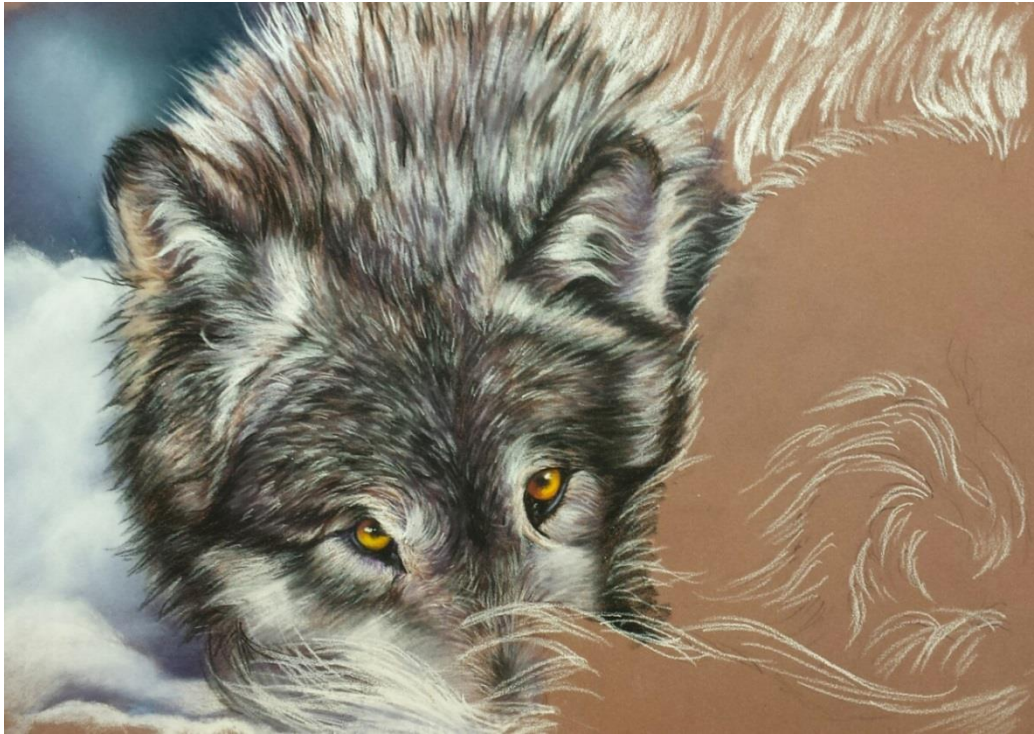
Add even layer of **430 CO (Ultramarine Blue Middle)** using the pencil on its side. Blend with fingers. Use **211 NP (White)** on its end, perpendicular to the paper, to make circular strokes of color. Blend the layers with your fingers. Pull dark hairs into the background.





## Back and Leg

Place white hairs in with **211NP (White)** being careful to follow the direction of hair growth. Use the **770 CO (Payne's Gray)** and some **750 CO (Neutral Black)** to add some shading to the area. Add additional white hairs with the **White Charcoal pencil**. Use a stiff #4 flat bristle brush to blend the area.





## Back Leg

Use the **White Charcoal Pencil** to mark some of the hairs so you can find them under subsequent layers of pastel pencil. Use **770 CO (Payne's Gray)** and **670 CO (Burnt Sienna)** to add medium colors. Use **750 CO (Neutral Black)** and **640 CO (Caput Mortem Violet)** to add the darker tones. Use a crosshatch stroke to evenly color the area. Use **211 NP (White)** to add color. Hold the pastel perpendicular to the paper and use a circular stroke. Brush with the bristle brush and blend with your fingers. Repeat as necessary to achieve a soft look.

Use **726 CO (Cold Gray 4)** to add a grey tone to the edge of the white fur area and make a transition to the darker tones and values of the leg.

Add the hairs to the leg with a sharp **White Charcoal Pencil** and a **105 CO (Ivory)**. The Ivory works better in the shadow areas of the fur. Be very careful to draw them in the direction that the hairs grow. Use the **211NP (White)** to add some bolder white accent hairs. Add darker accents where needed with **750 CO (Neutral Black)** and **640 CO (Caput Mortem Violet)**.



## Tail

Shade the shadow area of the tail with **770 CO (Payne's Gray)** and **750 CO (Neutral Black)**. Blend together with a light layer of **726 CO (Cold Gray 4)**. Use the **White Charcoal Pencil** or the edge of the **211NP (White)** to add the white hairs. Use the **6B Charcoal Pencil** to add a few black hairs.



## Snow

Base coat the snow with **430 CO (Ultramarine Blue Middle)** and add **211 NP (White)** by placing it perpendicular to the paper. Add color in a circular motion. Brush color with the stiff brush and blend with your fingers.

